



## Milwaukee 48-32-9921 Customizable Medium Case Insert for Freud 99-762 Shaker Rail & Stile Router Bit Set



cwennet

[VIEW IN BROWSER](#)

updated 25. 4. 2023 | published 25. 4. 2023

## Summary

Router bit set holder to replace retail package.

[Hobby & Makers](#) > [Organizers](#)

Tags: [milwaukee](#) [routerbits](#) [packout](#) [freud](#)

Insert for a Milwaukee 48-32-9921 Customizable Medium Case to hold the Freud 99-762 Premier Adjustable Rail & Stile router bit set (Shaker profile).

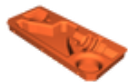
Replaces the big retail plastic box, saving space but more importantly better protecting the bit set and accessories.

Notes:

1. Both top and bottom inserts are included. I only printed the bottom because of some difficulty printing TPU on my current printer, but at this point won't print the top - it works without it.

2. Container holds the extra spacer washers and hex screw. Lid worked well without having to resize it or trim threads: I printed the container in PETG.
3. Fusion 360 file is included if you want to customize for your own bit set (file is a little cluttered - I'm a relative beginner with Fusion).
4. Photos show the insert vs. the original retail case.

## Model files



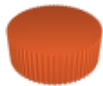
**router-bit-insert-top.stl**



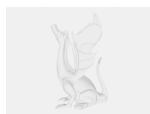
**router-bit-insert-bottom.stl**



**parts-container-body-stl.stl**



**parts-container-lid-stl.stl**



**router-bit-set-holder-v27.f3d**

## License

This work is licensed under a  
[Creative Commons \(4.0 International License\)](https://creativecommons.org/licenses/by/4.0/)



**Attribution**

- ✖ | Sharing without ATTRIBUTION
- ✔ | Remix Culture allowed
- ✔ | Commercial Use
- ✔ | Free Cultural Works
- ✔ | Meets Open Definition