



Furitek Cayman Pro Rear Bed and Cargo



Tomoaki Shimazu

[VIEW IN BROWSER](#)

updated 25. 4. 2023 | published 25. 4. 2023

Summary

Rear Bed and Cargo for Furitek Cayman Pro.

[Hobby & Makers](#) > [RC & Robotics](#)

Tags: [cargo](#) [rccar](#) [crawler](#) [cayman](#) [furitek](#) [caymanpro](#) [rearbed](#)

Rear Bed and Cargo for Furitek Cayman Pro.

Refer to the photo for the position of the mount on the frame.

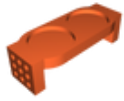
Filament: Mount and Bed - PLA, Cargo - Wood filament (I used ColorFabb Woodfill)

Slicer for Cargo: Ultimaker Cura 5.3 Christmas Alpha version and new tree support

What you need;

- Neodymium magnet Diameter 13.0mm Thickness 2.4mm x 4 (You can adjust the attached STEP files according to the size of available magnets)
- M2x5mm bolt x 4
- Epoxy resin adhesive

Model files



cayman-pro-rear-magnetic-mount-base.stl



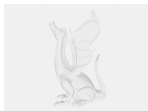
cayman-pro-rear-bed.stl



cayman-pro-wood-cargo.stl



cayman-pro-rear-magnetic-mount-base.step



cayman-pro-rear-bed.step



cayman-pro-wood-cargo.step

License ©

This work is licensed under a
[Creative Commons \(4.0 International License\)](https://creativecommons.org/licenses/by-nc/4.0/)



Attribution-NonCommercial

- ✗ | Sharing without ATTRIBUTION
- ✓ | Remix Culture allowed
- ✗ | Commercial Use
- ✗ | Free Cultural Works
- ✗ | Meets Open Definition

