

## Pickleball Paddle v2.0



RD Print Lab

[VIEW IN BROWSER](#)

updated 25. 4. 2023 | published 25. 4. 2023

### Summary

Still not USAPA approved. Still not a Joola. But it's a paddle. And you can print it! Again!

[Sports & Outdoor](#) > [Outdoor Sports](#)

Tags: [bat](#) [paddle](#) [pickleball](#)

This is v2.0 of a paddle design that can be printed on a Prusa MK3/4 bed size (X×Y×Z, 250 × 210 × 210 mm).

#### Suggested filament per part(s):

- TPU - Handle Grip, Handle Cap
- PP - Body Infill, Handle (to help reduce weight)
- PETG/PET - Surface
- PLA - Handle Peg (you can try PETG/PET, but it was much easier for me to just print this in PLA)

#### Other Materials Required:

- (2x) round wooden dowel, 1/4in diameter, 60mm in length
- Glue/Epoxy
- Clamps
- Spare wood/flat surfaces
- Low Expectations

## Printing Notes:

- I printed with a 0.6mm nozzle and 0.3mm layers.
- Check that the handle thickness is equal to the sum thickness of the two surfaces and the body infill (if you want to make the paddle as flush as possible).
- May need to adjust the Handle Cap height to fit flush against the Handle Grip; dependent on the material shrinkage.

## Assembly Notes:

- Print two faces, and glue to each side of the body infill.
- Use the Handle Pegs to help align the Handle Grip. I glued the grip, you can also wrap the grip in place.

## Final Thoughts:

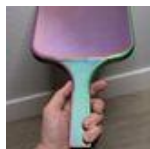
I printed the body infill in TPU. I didn't have PP. The Surfaces were printed with CF PETG. Although the surfaces printed flat, they had a slight curve when I removed them from the build plate. I glued the Surfaces to the TPU Body Infill piece, and the TPU Body Infill piece inherited the curve from the Surfaces. Now I have a oddly curved paddle.

My paddle still works and delivers a nasty curve! But it is heavy!

I highly recommend ordering PP for the Body Infill. I anticipate PLA may also work for the Body Infill to produce a straight paddle, but it will likely still be heavy.

An ideal comfortable Pickleball paddle weight is about 7-8 ounces (198-227g), I think my paddle is close to 10-11oz (283-311g). I think PP will help lower weight significantly.

## This remix is based on



### Pickleball Paddle

by RD Print Lab

# Model files



**STEP Paddle v2.0**

7 files



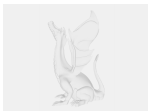
**paddle\_v20\_face.step**



**paddle\_v20\_handlegrip.step**



**paddle\_v20\_handlegrippeg.step**



**paddle\_v20\_handlecap.step**



**paddle\_v20\_handle.step**



**paddle\_v20\_bodyinfill.step**



**paddle\_v20.step**



**STL Paddle v2.0**

7 files



**paddle\_v20\_face.stl**



**paddle\_v20\_handlegrip.stl**



**paddle\_v20\_handlegrippeg.stl**



**paddle\_v20\_handlecap.stl**



**paddle\_v20\_handle.stl**



**paddle\_v20\_bodyinfill.stl**



**paddle\_v20.stl**

## License

This work is licensed under a  
[Creative Commons \(4.0 International License\)](https://creativecommons.org/licenses/by/4.0/)



### Attribution

- ✗ | Sharing without ATTRIBUTION
- ✓ | Remix Culture allowed
- ✓ | Commercial Use
- ✓ | Free Cultural Works
- ✓ | Meets Open Definition

