

Sherpa Mini PTFE Coupler Holder (Reverse Bowden, PC4-M10 coupler)



sulli18

[VIEW IN BROWSER](#)

updated 25. 4. 2023 | published 25. 4. 2023

Summary

An easy way to mount a PTFE tube coupler (PC4-M10) to a Sherpa Mini extruder.

[3D Printers](#) > [3D Printers - Upgrades](#)

Tags: [prusa](#) [ptfetube](#) [ptfe](#) [bowden](#) [ptfetubemount](#)
[coupler](#) [prusamini](#) [directdrive](#) [reversebowden](#)
[directdriveextruder](#) [annex](#) [sherpa](#) [couplers](#) [ptfecoupler](#)
[sherpamini](#) [annexengineering](#) [sherpaminiextruder](#)
[directdrivemount](#) [directdrivemod](#) [sherpaminireversebowden](#)

This models allows you to mount a PC4-M10 PTFE coupler above your Sherpa Mini (which is a bit loose normally) which fixes the bowden tube in place above your extruder.

The PC4-M10 coupler must be M10x1 threaded to match the threads in the stl, but you can modify the threads yourself as the source files are included. You will also need to ensure your coupler is a passthrough type coupler, so the PTFE tube can reach the extruder.

Parts Needed

- PC4-M10 (M10x1 thread) passthrough type
- 2 M3x20 button head cap screws
- 2 M3 lock nuts

In order to match the Sherpa Mini extruder, the STEP file was imported into Fusion 360 from [here](#). Many thanks to Annex Engineering for their awesome extruder!

Annex Engineering Github: <https://github.com/Annex-Engineering/>

Annex Engineering website: <https://annex-engineering.eu/>

Annex Engineering Discord: <https://discord.gg/MzTR3zE>

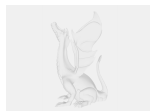
(I attempted to match the [Annex Engineering license here](#), which IMO supersedes the selected one on this post)

Cheers!

Model files



mini-sherpa-ptfe-coupler-holder.stl



mini-sherpa-ptfe-coupler-holder-v3.f3z

License

This work is licensed under a [Creative Commons \(4.0 International License\)](#)



[Attribution-ShareAlike](#)

-
- ✗ | Sharing without ATTRIBUTION
 - ✓ | Remix Culture allowed

- ✓ | Commercial Use
- ✓ | Free Cultural Works
- ✓ | Meets Open Definition