

## Avenger Wall Plate F810 to Optoma Projector



amoser

[VIEW IN BROWSER](#)

updated 25. 4. 2023 | published 25. 4. 2023

### Summary

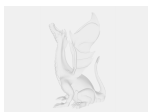
Use this plate to connect a Avenger Wall Plate F810 with an articulating baby pin to a Optoma 4K Projector.

[Hobby & Makers](#) > [Other Ideas](#)

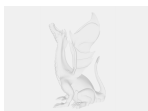
Tags: [projector](#) [optoma](#) [beamer](#) [avengerwallplate](#) [f810](#)

Use this plate to connect a Avenger Wall Plate F810 with an articulating baby pin to a Optoma 4K Projector. Add a superclamp and it makes up for a simple and sleek mounting solution. I machined it from black MDF and used it in many exhibitions.

### Model files



**f810-to-optoma.f3d**



**f810-to-optoma.step**



**f810-to-optoma.stl**

## License ©

This work is licensed under a  
**Creative Commons (International License)**



**Public Domain**

---

- ✓ | Sharing without ATTRIBUTION
- ✓ | Remix Culture allowed
- ✓ | Commercial Use
- ✓ | Free Cultural Works
- ✓ | Meets Open Definition