



BambuLab P1P & P1S Temperature towers

A AlexM

[VIEW IN BROWSER](#)

updated 17. 1. 2024 | published 17. 1. 2024

Summary

These are remixes of Creativity_crush's temperature towers, but with the P1P/P1S presets, and some improvements.

[3D Printers](#) > [Test Models](#)

Tags: [temperaturetower](#) [temptower](#) [bambu](#) [bambulab](#)
[bambulabp1p](#) [bambup1p](#)

Regular - same as the original model, but changed presets for P1P, and modified gcode for temperature change. Takes 25g of PLA and 1H:30M time.

Small - Same as before, 50% size. Takes 8g PLA and 1H:10M time.

Reversed - Changed temperatures to be 200-240. Reversed order - hottest on bottom, coldest on top. Same size as regular. Added both 3mf file for tinkering, and ready gcode with modified temperature changes.

24/08/2023 EDIT: Added Reversed version files for P1S

This remix is based on



Bambu studio - Temperature tower (All)

by Creativity_crush

Model files



bambulab-p1p-temperature-tower-pla-200-240-reversed.3mf

☐ Reversed version for P1P



bambulab-p1p-temperature-tower-pla-190-230-smallgco... .3mf

☐ Small version P1P



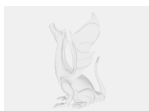
bambulab-p1s-temperature-tower-pla-200-240-reversed.3mf

☐ Reversed version for P1S



bambulab-p1p-temperature-tower-petg-250-290.3mf

☐ P1P tower for PETG



bambulab-p1s-temperature-tower-petg-250-290.3mf

☐ P1S tower for PETG

License ©

This work is licensed under a
[Creative Commons \(4.0 International License\)](#)



Attribution

✖ | Sharing without ATTRIBUTION

- ✓ | Remix Culture allowed
- ✓ | Commercial Use
- ✓ | Free Cultural Works
- ✓ | Meets Open Definition