

RG6 Cable Clip

 r31joel

[VIEW IN BROWSER](#)

updated 28. 5. 2023 | published 28. 5. 2023

Summary

Uses a 7GA screw to attach to building framework. Right size, impact driver, no hammer!

[Household](#) > [Other House Equipment](#)

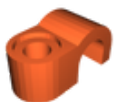
Tags: [electrical](#) [electrician](#) [antenna](#) [trades](#) [network](#)
[building](#) [electronics](#) [tv](#) [networking](#)

Printed in Aurarum PETG. .2mm layer height.

Uses a 7GA screw to attach to building framework. Right size, impact driver, no hammer!

Over tightening will cause it to split though.

Model files



rg6clip-common.stl

License

This work is licensed under a
Creative Commons (4.0 International License)



Attribution—Noncommercial—Share Alike

- ✗ | Sharing without ATTRIBUTION
- ✓ | Remix Culture allowed
- ✗ | Commercial Use
- ✗ | Free Cultural Works
- ✗ | Meets Open Definition