

WobbleX for Prusa



Rafael Pazini

[VIEW IN BROWSER](#)

updated 25. 4. 2023 | published 25. 4. 2023

Summary

WobbleX adapter for Prusa stock and Bear

[3D Printers](#) > [3D Printers - Upgrades](#)

Here you will find the Adapter for Wobblex and the X-Axis modified to enable WobbleX work.

I used the original Bear X-Axis and Prusa X-Axis and only inverted the Y position to set the trapezoidal screw down instead of up.

Requirements

- 4x - m3x18mm Countersunk Head Screw\

Hope you enjoy!

This remix is based on



i3 MK3S+ printable parts

by Prusa Research



**GitHub - MirageC79/Interfaces-for-WobbleX-
integration: CADs and STLs that can be adapted to
various 3D printers in order to benefit from the best Z wobble
management system.**



**GitHub - gregsaun/prusa_i3_bear_upgrade: Stronger
frame for Prusa i3 MK2(s), MK2.5 and MK3**

Model files

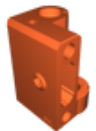


X-Axis_stock

2 files



x-end-motor.stl



x-end-idler.stl

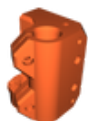


X-Axis_bear

2 files



x_end_motor.stl



x_end_idler.stl



wobblex_adapter.stl

License ©

This work is licensed under a
GNU



General Public License v3.0

- ✗ | Sharing without ATTRIBUTION
- ✓ | Remix Culture allowed
- ✓ | Commercial Use
- ✓ | Meets Open Definition
- i | Share under the same license