



## Cyberpunk 2077 cyberdeck-like M.2 NVMe SSD keychain



Serial-Comma

[VIEW IN BROWSER](#)

updated 24. 6. 2023 | published 24. 6. 2023

### Summary

(yes it works with SATA M.2s as well, NVMe just sounds cooler)



0.44 hrs



2 pcs



0.20 mm



0.40 mm



PLA  
PET



4 g



Prusa  
MK3/S/S+

[Gadgets](#) > [Computers](#)

Tags: [sata](#) [nvme](#) [pc](#) [m2](#) [ssd](#) [cyberdeck](#) [cyberpunk](#)  
[cyberpunk2077](#)

Do you have a dead SSD and an unshatterable ego? Then look no further, print this, superglue the two sides together, and attach it to your bag, purse, keys or anything you desire!

Originally created cause I thought M.2 SSDs kinda looked like the cyberdeck from cyberpunk 20

I recommend using a 10-12mm diameter keychain ring to attach directly onto the print.

## Print settings:

Literally any of the prusaslicer defaults

No supports or brim

Infill doesn't matter

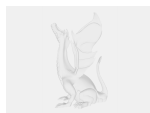
PLA or PETG, the choice is up to you.

## Model files



### nvme-keychain-v7.3mf

☐ remember to flip the cover upside down before printing



### nvme-keychain-v7.f3d

## Print files



### nvme-keychain-v7\_02mm\_pla\_mk3s\_26m.gcode

PLA 0.40 mm 0.20 mm 0.44 hrs 4 g Prusa MK3/S/S+



### nvme-keychain-v7\_02mm\_petg\_mk3s\_26m.gcode

PET 0.40 mm 0.20 mm 0.44 hrs 4 g Prusa MK3/S/S+

## License ©

This work is licensed under a  
GNU



- ✗ | Sharing without ATTRIBUTION
- ✓ | Remix Culture allowed
- ✓ | Commercial Use
- ✓ | Meets Open Definition
- i | Share under the same license