



Giant Lego Person

 **etersplat**

[VIEW IN BROWSER](#)

updated 25. 4. 2023 | published 25. 4. 2023

Summary

This is close to a 2ft tall Legolike person. All printable on a 225mm bed.

[Toys & Games](#) > [Action Figures & Statues](#)

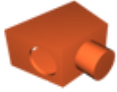
Tags: [magnets](#) [lego](#) [huge](#) [gigantic](#)

I wanted to come up with something I could print for my daughter's birthday, and I came up with this. This was completely printed on my Ender 3, and is sized for a small printer like that. I created it to use magnets to hold everything together, and allow it to articulate. It uses 10 12x 3mm, and 4 6x3mm magnets to hold the arms, legs, and torso together. just superglue the magnets in to place, and let it dry, then assemble everything! You will need supports on some of the parts. There are 2 files for the head. 1 is a 2 piece that doesn't need supports, just place the flat pieces on the bed, and 1 that will need supports, but prints as 1 piece. **MAKE SURE YOU CHECK MAGNET POLARITY!**

Print 2 arm hinges, 2 leg hinges, and 1 of everything else.

Have fun with it, and share any makes!

Model files



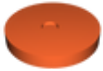
body.stl



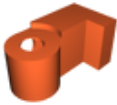
right-hand.stl



head-top.3mf



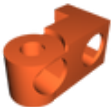
arm-hinge.stl



right-leg.stl



1-piece-head.3mf



left-leg.stl



left-arm.stl



right-arm.stl



head-bottom.3mf



left-hand.stl



head-top.stl



waist.stl



leg-hinge.stl



head-bottom.stl

License ©

This work is licensed under a
[Creative Commons \(4.0 International License\)](#)



Attribution-NonCommercial

- ✗ | Sharing without ATTRIBUTION
- ✓ | Remix Culture allowed
- ✗ | Commercial Use
- ✗ | Free Cultural Works
- ✗ | Meets Open Definition

