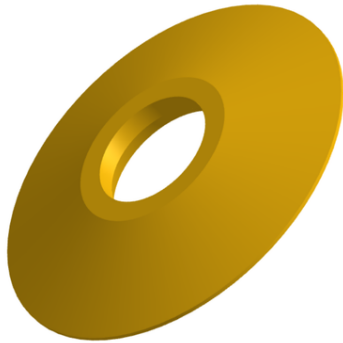


3D MODEL ONLY



Universal Auto-centering Adaptor for Bambu Lab Spool Switcher (Shaft Adapter for filament spool holes 40-95mm)

 Customary2226

[VIEW IN BROWSER](#)

updated 25. 4. 2023 | published 25. 4. 2023

Summary

Auto-centering Bambu Lab Respooler Shaft Adapter for spool holes 40-95mm Compatible with the shaft from the original.

[3D Printers](#) > [Accessories](#)

Tags: [spool](#) [holder](#) [filament](#) [center](#) [adapter](#) [lab](#) [auto](#) [automatic](#) [adaptor](#) [centering](#) [spooler](#) [bambu](#) [bambulab](#) [respooler](#) [recentering](#)

Auto-centering Bambu Lab Respooler Shaft Adapter for spool holes 40-95mm

Compatible with the shaft from the original. Print with the widest side facing down. Use with the original shafts in here:

<https://www.printables.com/model/407688-bambu-lab-p1-x1-x1c-x1cc-filament-spool-switcher-w>

If you press the heart to like this, it will motivate me to make more solutions available :-) Thanks and enjoy!

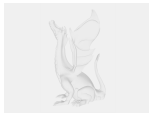
This remix is based on



Bambu Lab P1 / X1 / X1C / X1CC Filament Spool Switcher & Winder if you use AMS

by Miklos Kiszely

Model files



bambu-lab-filament-respool-shaft-adapter-40-95mm-au... .step

License ©

This work is licensed under a
[Creative Commons \(4.0 International License\)](#)



Attribution—Noncommercial—No Derivatives

-
- ✗ | Sharing without ATTRIBUTION
 - ✗ | Remix Culture allowed
 - ✗ | Commercial Use
 - ✗ | Free Cultural Works
 - ✗ | Meets Open Definition