



Puzzle Piece Chess Board



Tomahawk711

[VIEW IN BROWSER](#)

updated 20. 6. 2023 | published 20. 6. 2023

Summary

This chess board has been deconstructed to be able to be printed on the MINI+ For all chess enthusiasts



20.43 hrs



4 pcs



0.15 mm
0.20 mm



0.40 mm



PLA



269 g



Prusa MINI /
MINI+

[Toys & Games](#) > [Board Games](#)

Tags: [mini](#) [custom](#) [easyassembly](#) [chessboard](#) [easy](#)

This chess board was made to be able to be printed with any 3D printer not just those with a large print volume! Easy to assemble and printer-friendly. Great for beginners looking for their first big, no-fuss project!

Pieces required:

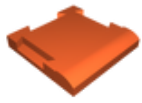
64 Chess Tiles (32 of each color)

4 Corner Pieces

4 Side Pieces

1 Middle Piece

Model files



side-chess-piece.stl



corner-chess-piece.stl



middle-chess-piece.stl



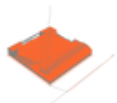
chess-tile.stl

Print files



middle-chess-piece.gcode

🌀 PLA 🌀 0.40 mm ≡ 0.15 mm ⌚ 6.08 hrs ⚖️ 77 g 🖨️ Prusa MINI / MINI+



side-chess-piece.gcode

🌀 PLA 🌀 0.40 mm ≡ 0.15 mm ⌚ 5.03 hrs ⚖️ 62 g 🖨️ Prusa MINI / MINI+



corner-ches-piece.gcode

🌀 PLA 🌀 0.40 mm ≡ 0.15 mm ⌚ 5.75 hrs ⚖️ 70 g 🖨️ Prusa MINI / MINI+



16-chess-tiles.gcode

🌀 PLA 🌀 0.40 mm ≡ 0.20 mm ⌚ 3.57 hrs ⚖️ 60 g 🖨️ Prusa MINI / MINI+

License ©

This work is licensed under a
Creative Commons (4.0 International License)



Attribution

- ✗ | Sharing without ATTRIBUTION
- ✓ | Remix Culture allowed
- ✓ | Commercial Use
- ✓ | Free Cultural Works
- ✓ | Meets Open Definition