

3D MODEL ONLY

## MIB3 Neuralyzer Replica



Beni

[VIEW IN BROWSER](#)

updated 25. 4. 2023 | published 25. 4. 2023

### Summary

Small replica of a MIB3 replica i made a year ago using screenshots from the movie.

---

[Toys & Games](#) > [Other Toys & Games](#)

---

Printed most parts on an SLA printer. But the base was made on my MK3S (resin couldn't handle the impact so PETG is your friend here). You can probably print all of that on an FDM printer, but it would take a lot of sanding to get it smooth.

I'm sorry that I don't have a parts list; I used mostly stuff I had laying around.

For the electrical, it's probably not a real help, but I used a small push button that simultaneously turned the light on and off so it was only on for a couple of milliseconds so it wouldn't fry, took a small 2.2V LED and a 12V battery from my local supermarket (fridge light battery). It was a lot of trial and error; Improvements would be welcome.

If the response is big enough, I could probably sit down and sketch a schematic, but I'm just a hobbyist.

But lastly, have fun redesigning the model, and please show me your remixes. I would love to see some improvements.

## Model files



**button.3mf**



**base\_cover.3mf**



**base.3mf**



**lever.3mf**



**light\_cap.3mf**

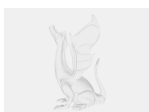


**base\_cap.3mf**



**light.3mf**

## Other files



**graphic.zip**

☐ Scale may not apply

# License ©

This work is licensed under a  
**Creative Commons (International License)**



## **Public Domain**

---

- ✓ | Sharing without ATTRIBUTION
- ✓ | Remix Culture allowed
- ✓ | Commercial Use
- ✓ | Free Cultural Works
- ✓ | Meets Open Definition