



## TOGGLE CLAMP

 **Pa1**

[VIEW IN BROWSER](#)

updated 25. 4. 2023 | published 25. 4. 2023

### Summary

An easy to print toggle clamp for your work surface

[Hobby & Makers](#) > [Tools](#)

Tags: [tool](#) [clamp](#) [bench](#) [useful](#) [workbench](#) [toggle](#)

NOTE: This clamp needs to be screwed on a work surface, like any toggle clamp.

I needed a strong toggle clamp to glue my part together.  
So i made this one.

Easy to print, only the base and the threaded head need a few supports.  
Nothing tricky here.

Parts are already placed in the right orientation.  
Quantities are in the file name. (at the end)  
Parts are placed for maximum solidity.

Print the pad in TPU.

Print everything with at least 5 walls (i used 7, with 25% infill)

For the shafts, boost your temperature a bit to ensure good layer adhesion. Those parts are placed on the bed to give the maximum strength against shear forces of the lever and links. But this means it is

also a bit weak when you put the screw in place. So be sure to have a good layer adhesion. ;)

Tolerances have been calculated to ensure a nice free movement.

Exploded view included for easy assembly.

You will need:

m5x16 (2x) for the base.

m5x 10 (6x) for the rest.

If you have any questions/suggestions, you can reach me here or on my facebook page:

<https://www.facebook.com/PA1MAKER>

SUPPORT MY WORK ON PATREON: [https://www.patreon.com/PA1\\_MAKER](https://www.patreon.com/PA1_MAKER)

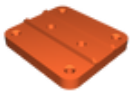
## Model files



**shaft-001-2x.stl**



**link-02-2x.stl**



**base.stl**



**bushing.stl**



**thumb-screw.stl**



**link-001-2x.stl**

---



**threaded-head.stl**

---



**large-washer-2mm-2x.stl**

---



**shaft-stopper-5x.stl**

---



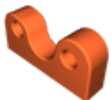
**small-washer-2x.stl**

---



**shaft-002-3x.stl**

---



**pivot-block.stl**

---



**soft-pad.stl**

---



**handle.stl**

# License ©

This work is licensed under a  
**Creative Commons (4.0 International License)**



**Attribution—Noncommercial—No Derivatives**

---

- ✗ | Sharing without ATTRIBUTION
- ✗ | Remix Culture allowed
- ✗ | Commercial Use
- ✗ | Free Cultural Works
- ✗ | Meets Open Definition