

## Adapter for laser engraver

 mrprkr

[VIEW IN BROWSER](#)

updated 25. 4. 2023 | published 25. 4. 2023

### Summary

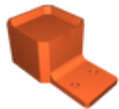
Slip on mount for using Prusa MK3 as laser cutter/engraver

[3D Printers](#) > [3D Printers - Upgrades](#)

Tags: [laser](#) [lasercutter](#) [prusai3mk3](#)

Easily mount laser head to the extruder head for use as an engraver/cutter

### Model files



**mount.stl**

# License ©

This work is licensed under a  
**Creative Commons (4.0 International License)**



## Attribution

---

- ✗ | Sharing without ATTRIBUTION
- ✓ | Remix Culture allowed
- ✓ | Commercial Use
- ✓ | Free Cultural Works
- ✓ | Meets Open Definition