



## 1:18 Jurassic Park SUV



Toymakr3d

[VIEW IN BROWSER](#)

updated 16. 11. 2020 | published 16. 11. 2020

### Summary

1:18 SUV from classics dino movie.

[Toys & Games](#) > [Vehicles](#)

Tags: [toy](#) [car](#) [vehicle](#) [suv](#) [jurrasic](#)

1:18 SUV from classics dino movie. Compatible with 3.75 inch figure and Super Colossal T.rex toy from Jurassic World Series.

Disclaimer:

Contains small parts and requires high precision. Your printer may need to be properly calibrated for best results.

More Updates: <https://www.instagram.com/toymakr3d/>

- Files have been checked in slicer software and 100%work
- Can be printed without support
- No bolt
- Size: L:270mm/ W:110mm/ H:110mm
- Scale: 1:18
- Suitable for 3.75 Inch figure
- 5 doors and engine cap can be opened
- Storage for 5th wheel
- Steering front wheels
- Best print orientation for maximum strength result

-Easy to print

-Easy to assemble

-Easy to rescale

Note: You need super glue to assemble the door parts

Tips: Use transparent plastic as window glasses & Print glass roof with transparent filament.

## Print instructions

Sample Print Setting:

Nozzle: 0.4mm

Layer: 0.1mm

Infill: 15%

Wall: 0.8mm

Filament: Esun PLA+

Temperature: 205°C

Speed: 50/s

## Model files



**f\_body\_engine\_cap.stl**

---



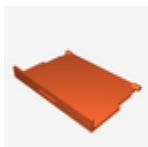
**e\_body\_roof2\_glass.stl**

---



**h\_body\_engine\_grail.stl**

---



**g\_body\_back\_storage\_cover.stl**

---



**d\_body\_roof1.stl**

---



**c\_body\_bottom.stl**

---



**b\_body\_back\_no\_default\_support.stl**

---



**b\_body\_back\_default\_support.stl**

---



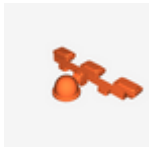
**k\_body\_exhaust.stl**

---



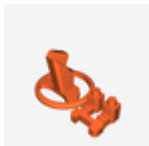
**a\_body\_front1\_no\_default\_support.stl**

---



**j\_body\_headlight.stl**

---



**m\_dashboard2\_accesories.stl**

---



**a\_body\_front1\_default\_support.stl**

---



**o\_door\_side\_top.stl**

---



**s\_door\_rear\_bottom.stl**

---



**p\_seat\_back.stl**

---



**l\_dashboard.stl**

---



**n\_door\_side\_bottom.stl**

---



**r\_door\_rear\_top.stl**

---



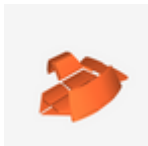
**u\_rim.stl**

---



**v\_tie\_rods.stl**

---



**w\_window\_glasses.stl**

---



**t\_wheel.stl**

---



**q\_seat\_front.stl**

---



**i\_body\_bumper\_default\_support.stl**

---



**i\_body\_bumper\_no\_default\_support.stl**

[Find source .stl files on Thingiverse.com](#)

## License ©

This work is licensed under a  
**Creative Commons (4.0 International License)**



**Attribution—Noncommercial—No Derivatives**

---

- ✗ | Sharing without ATTRIBUTION
- ✗ | Remix Culture allowed
- ✗ | Commercial Use
- ✗ | Free Cultural Works
- ✗ | Meets Open Definition