

## Bambu USB 446



mfetting

[VIEW IN BROWSER](#)

updated 5. 5. 2023 | published 5. 5. 2023

## Summary

The Bambu USB 446 uses a printed circuit board (Power Tap), a USB Dual Port board, and two Bambu 4-pin cables.

[3D Printers](#) > [3D Printers - Upgrades](#)

Tags: [4pin](#) [bambulab](#) [x1c](#) [bambu](#) [p1p](#)

## Bambu USB 446

The Bambu USB is for the Bambu Lab X1 3D printer. It utilizes the 24v provided by the Bambu Bus Cable to power the two USB Ports/6-Pin Connector.

Items Needed to Construct the Bambu USB:

- 2x Molex 4 pin, CONN-TH\_0430450400
- 1x Molex 4 pin, CONN-TH\_0430450600
- 1x Power Tap V2.0 PCB
- 1x Dual USB Fast Charger Buck Module Input 24V
- 1x 3Mx25mm Screw
- 2x M2x4mm Screws
- 2x M2x6mm Screws

Assembled units and parts are for sale at **3DMachinist** Etsy Store:

- Kits (PCB Board, USB Board, screws)
- Power Tab PCB (440, 446)
- Bambu Lab 4-Pin Cable

## Installation

Install the **Bambu USB 446** on the back of the printer using the top center screw via an M3x22mm screw.



Use the Bambu Bus Cable to connect the Bambu USB to the printer; use a second Bambu Bus Cable to connect it to the Filament Buffer.

## Specification

- Materials: Plastic, metal, printed circuit board
- Input: 24V 3A
- USB Output: default 5V
- Print size: 66.2\*52\*22 mm
- 1x M3x22mm Screw
- 2x M2x4mm Screws
- 2x M2x6mm Screws
- 2x Bambu Bus Cable (available through the Bambu Lab Store)

## Recommendations

- Filament: PETG
- Infill: 25%
- Support: Yes
- Brim: Yes

## History

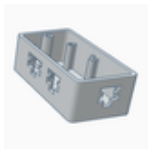
I had installed LED lights on my X1C, using a 6-Pin cable to access the 24v provided by the printer to the AMS unit (by plugging it into the second

AMS 6-Pin port). That worked great when I only had one AMS, but the cable length became a concern when I added my second AMS.

I designed a Power Tap box with a 6-pin connector to draw 24v from the 4-pin Bambu Bus Cable. I then added a USB Board to the STL design to provide additional options in the future.

Assembled units and parts are for sale at **3DMachinist** Etsy Store

## This remix is based on



### X1C Power Tap 446

by mfetting

## Model files



bambu-usb-446.stl

## License ©

This work is licensed under a  
**Creative Commons (4.0 International License)**



**Attribution-NonCommercial**

- 
- ✗ | Sharing without ATTRIBUTION
  - ✓ | Remix Culture allowed
  - ✗ | Commercial Use
  - ✗ | Free Cultural Works
  - ✗ | Meets Open Definition

