



X-wing Tournament Tray



Scotty7642

[VIEW IN BROWSER](#)

updated 26. 4. 2023 | published 26. 4. 2023

Summary

I took a combination of ideas, and added a few of my own to come up with this tournament tray. Enjoy.



33.81 hrs



5 pcs



0.20 mm



0.40 mm



PLA



416 g



Prusa MINI /
MINI+

[Tabletop Miniatures](#) > [Miniature Gaming Accessories](#)

Tags: [starwars](#) [xwing](#) [starwarsxwing](#) [xwingminiatures](#)
[tournament](#) [xwing20](#) [xwinggame](#) [xwingtmg](#)
[xwingminiaturegame](#) [xwingtm](#)

I took a combination of ideas, and added a few of my own to come up with this tournament tray. Enjoy.

The maneuver template and range template trays from TheDustyCelt are perfect. No need to change those and they are strictly loaded here for your convenience.

I heavily modified TheDustyCelts tray design, providing room for token storage and what not. This will not fit in the original Stanley case that it

was originally designed for. So if that is a need of yours, go with the original design.

The ship tray was inspired by EagleEyes911 design. This design can hold 9 small ships, 1 large ship, 2 medium ships, and 1 small ship, or 3 medium ships, and 1 small ship, or 9 small ships, or some other combination.

One reason I like the original set is that it is small enough to be created on a Prusa Mini.

I used 3x6mm round rare earth magnets to attach all the components. I know that was a question in one of the comments to TheDustyCelts design.

Note that the slot for the range three rule is a bit tight for my 1st edition cardboard range rule. Check the dimensions and adjust before printing.

This remix is based on



X-wing miniatures tournament tray

by EAGLEEYES911



X-Wing Tournament Tray for Harbor Freight & Stanley Organizers

by thedustycelt

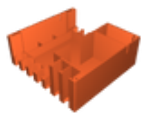
Model files



ship-tray.stl



modified-accessory-deluxe-tray-2of2.stl



modified-accessory-deluxe-tray-1of2.stl

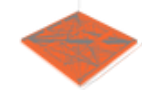


template_tray-6mm-straightsturns.stl



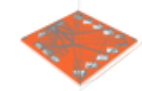
template_tray-6mm-banksrange.stl

Print files



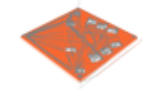
ship-tray_02mm_pla_mini_5h25m.gcode

🌀 PLA 📏 0.40 mm 📐 0.20 mm ⌚ 5.42 hrs ⚖️ 76 g 🖨️ Prusa MINI / MINI+



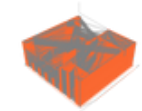
template_tray-6mm-straightsturns_02mm_pla_mini_4h47m.gcode

🌀 PLA 📏 0.40 mm 📐 0.20 mm ⌚ 4.79 hrs ⚖️ 66 g 🖨️ Prusa MINI / MINI+



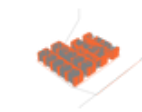
template_tray-6mm-banksrange_02mm_pla_mini_4h41m.gcode

🌀 PLA 📏 0.40 mm 📐 0.20 mm ⌚ 4.68 hrs ⚖️ 62 g 🖨️ Prusa MINI / MINI+



modified-accessory-deluxe-tray-1of2_02mm_pla_mini_1... .gcode

🌀 PLA 📏 0.40 mm 📐 0.20 mm ⌚ 13.58 hrs ⚖️ 159 g 🖨️ Prusa MINI / MINI+



modified-accessory-deluxe-tray-2of2_02mm_pla_mini_5... .gcode

🌀 PLA 📏 0.40 mm 📐 0.20 mm ⌚ 5.34 hrs ⚖️ 53 g 🖨️ Prusa MINI / MINI+

License

This work is licensed under a
Creative Commons (4.0 International License)



Attribution—Noncommercial—Share Alike

- ✗ | Sharing without ATTRIBUTION
- ✓ | Remix Culture allowed
- ✗ | Commercial Use
- ✗ | Free Cultural Works
- ✗ | Meets Open Definition