

Parametric ender 6, ender 3 S1 / S1 Pro (sprite extruder) Dial indicator snap on mount - can be adjusted easily to any printer



LoXiRe

[VIEW IN BROWSER](#)

updated 8. 5. 2023 | published 8. 5. 2023

Summary

Parametric ender 6, 3 S1 / S1 Pro (sprite extruder) Dial indicator snap on mount - can be adjusted easily to any printer

[3D Printers](#) > [Accessories](#)

Tags: [sna](#)[pon](#) [snap](#)[fit](#) [snap](#) [ender3](#)[sprite](#) [ender3](#)[s1](#) [s1](#)
[ender3](#)[s1](#)[plus](#) [ender3](#) [mount](#) [dial](#)[indicator](#)[mount](#) [sprite](#)[pro](#)
[s1](#)[pro](#) [sprite](#)[extruder](#)[pro](#) [sprite](#)[extruder](#) [ender3](#)[s1](#)[pro](#)
[dial](#)[indicator](#) [ender6](#) [ender](#)

Parametric S1 / S1 Pro (sprite extruder) Dial indicator mount - can be adjusted easily to any printer

I wanted a model that can be easily fitted to any printer , and any dial indicator so everything is prameric

if you want to adjust it to your printer simply pick a rib on the extruder and change :

Fan hight

Fan with

Undercarrige_Hook_fan_thickness

undercarige

Also I did NOT used the screw , i simply sized the hole 0.1mm less then my dial indicator and pressure fit. Petg is bendy enough.

Also i added a tip handle ti remove it , yes it might break the model but its better yhen break the fan or disassemble the cr touch to.remove it.

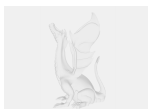
Model files



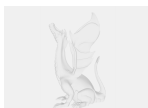
my-s1-pro-dial-indicator-mount-v9.stl



my-s1-pro-dial-indicator-mount-v9.step



my-s1-pro-dial-indicator-mount-v9.f3d



my-ende-6-pro-dial-indicator-mount-v2.step

License

This work is licensed under a
Creative Commons (4.0 International License)



Attribution-ShareAlike

- ✗ | Sharing without ATTRIBUTION
- ✓ | Remix Culture allowed
- ✓ | Commercial Use
- ✓ | Free Cultural Works
- ✓ | Meets Open Definition