



Swivel Link



engineererrant

[VIEW IN BROWSER](#)

updated 26. 4. 2023 | published 26. 4. 2023

Summary

Sometimes, you have a couple things, right? You'd like one of those things to spin...but you don't want everything to...

[Hobby & Makers](#) > [Other Ideas](#)

Tags: [link](#) [thingiverse](#) [linkage](#) [swivel](#) [swiveljoint](#)

Sometimes, you have a couple things, right? You'd like one of those things to spin...but you don't want everything to spin. Friend, do I have a 3d print for you.

These rings are 14mm ID - feel free to scale everything up if you want a chonkier swivel. (If you can scale them down, good on you, but this is just about as small as I can manage.) Everything has a flat surface that you should lay flat on the bed, as shown.

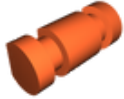
I don't know how to say this emphatically enough: if a person is going to be standing on or under a thing that might hurt them if it fell, do not use this to hold that thing up.

Category: Parts

Model files



2023-02-14_swivel_link_v1_-_ring.stl



2023-02-14_swivel_link_v1_-_post.stl



2023-02-14_swivel_link_v1_-_clip.stl

[Find source .stl files on Thingiverse.com](#)

License ©



This work is licensed under a
Creative Commons (4.0 International License)

Attribution-ShareAlike

- ✗ | Sharing without ATTRIBUTION
- ✓ | Remix Culture allowed
- ✓ | Commercial Use
- ✓ | Free Cultural Works
- ✓ | Meets Open Definition