



FLOW WALL Screw Mount



Spool Designs

[VIEW IN BROWSER](#)

updated 23. 8. 2023 | published 23. 8. 2023

Summary

FLOW WALL Screw Mount to replace drywall screw mount

[Hobby & Makers](#) > [Tools](#)

Tags: [mount](#) [heater](#) [drywall](#) [flowwall](#) [heatstorm](#)

FLOW WALL Screw Mount

Solution for a drywall screw mount requirement on a FLOW WALL. I used this to mount my HEAT STORM electric heater.

Materials

- (2) 13x4 screw
- (2) 8.5mm Hex Nut

Instructions

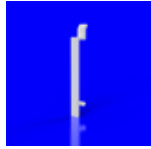
Slide the hex nut into the hole. Screw the screw through the hole into the nut and flush with the back of the mount.

Printing Instructions

- 3 wall loops or maximum strength

- 0.2mm layer height

This remix is based on



FLOW WALL Bracket - Remixable

by Spool Designs

Model files



screw-hanging-wall-mount.3mf



screw-hanging-wall-mount.stl

License

This work is licensed under a
[Creative Commons \(4.0 International License\)](#)



Attribution—Noncommercial—Share Alike

-
- ✗ | Sharing without ATTRIBUTION
 - ✓ | Remix Culture allowed
 - ✗ | Commercial Use
 - ✗ | Free Cultural Works
 - ✗ | Meets Open Definition