

## heat Set Insert Press



Nick

[VIEW IN BROWSER](#)

updated 18. 12. 2023 | published 18. 12. 2023

### Summary

This is a solder iron holder that moves on 2040 extrusion so you can put your inserts in perfectly perpendicular.

[Hobby & Makers](#) > [Electronics](#)

Tags: [heat](#) [set](#) [solderingstation](#) [heatsetinsert](#)

This can hold your solder iron for you while you solder or what I use it for is you perfectly insert you heat set inserts in and you can turn it 90 degrees to hold your soldering iron as you solder stuff.

Materials needed

around 300mm 2040 extrusion

v slot wheels x 8

flange bearings x 4 (5mm bore 14mm OD 5m tall )

Screws:

M5 by 25 x 2

M4 by 20 x 8

M3 by 8 x 3

M3 by 25 x 1

M3 by 10 x 2

M3 by 6 x 1

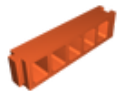
M3 by 30 x 1

## Model files

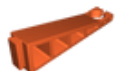


### Arm parts

3 files



**exstention-arm.stl**



**arm.stl**

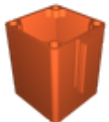


**rotateing-arm.stl**



### Counter Weight parts

3 files



**counter-weight-bigger.stl**



**counter-weight-smaller.stl**



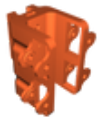
**counter-weight-top.stl**



**base.stl**



**top-braket.stl**



**carriage.stl**

## License

This work is licensed under a  
[Creative Commons \(4.0 International License\)](https://creativecommons.org/licenses/by/4.0/)



### Attribution

- ✗ | Sharing without ATTRIBUTION
- ✓ | Remix Culture allowed
- ✓ | Commercial Use
- ✓ | Free Cultural Works
- ✓ | Meets Open Definition