

Monoprice Select Mini e3d v6 Fan Mount



AlmightyFireFly

[VIEW IN BROWSER](#)

updated 26. 4. 2023 | published 26. 4. 2023

Summary

I really liked the original design except for the cooling fan duct. Luckily the original post had a step file of the...

[3D Printers](#) > [3D Printers - Upgrades](#)

Tags: [mount](#) [fan](#) [e3dv6](#) [thingiverse](#) [monopriceselectmini](#)

I really liked the original design except for the cooling fan duct. Luckily the original post had a step file of the entire assembly. I just imported it to fusion 360, made my changes and here is the finished product. Hope you like it.

Original. <https://www.thingiverse.com/thing:2722203>

The mount I used to convert my MP mini to e3d. <https://www.thingiverse.com/thing:2698327>

I connected the e3d heatsink fan direct to 12v and put the blower fan on the controlled output from the mainboard. All works well so far.

Print Settings

Printer:

LianTao i3 (use ender 3 cura profile)

Resolution:

.2

Infill:

20

Filament:

Geetech PLA

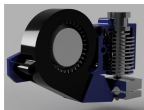
Black

Notes:

Only used zigzag supports touching build plate.

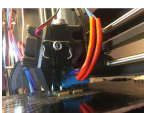
Line width set to .5 with .4 nozzle. Category: 3D Printing

This remix is based on



Monoprice Select Mini V2. Dual Fan Mount.

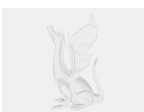
by lowfat



Monoprice Select Mini V2 - Genuine e3d V6 mount. Single piece. Stock fan.

by kozbot

Model files



dual_fan_mount_e3d_v6_with_surround_duct.step



monoprice_select_mini_e3d_fan_mount.stl

[Find source .stl files on Thingiverse.com](#)

License ©

This work is licensed under a
Creative Commons (4.0 International License)



Attribution

- ✗ | Sharing without ATTRIBUTION
- ✓ | Remix Culture allowed
- ✓ | Commercial Use
- ✓ | Free Cultural Works
- ✓ | Meets Open Definition