

gMax Glass Bed Support



AlmightyFireFly

[VIEW IN BROWSER](#)

updated 26. 4. 2023 | published 26. 4. 2023

Summary

This is an improved bed support for the gMax 1.5 XT +. The stock supports allowed movement of the heated glass build...

[3D Printers](#) > [3D Printers - Upgrades](#)

Tags: [support](#) [heatbed](#) [heatedbed](#) [thingiverse](#)
[heatedbuildplatform](#) [gmax](#)

This is an improved bed support for the gMax 1.5 XT +.

The stock supports allowed movement of the heated glass build plate.

This support allows adjustment of bed level and holds the glass firmly with 8 m4 cap screws and lock nuts. M5 screws can be used if no adjustment is needed.

Print Settings

Printer:

gMax 1.5 XT +

Rafts:

No

Supports:

No

Resolution:

.28

Infill:

15%

Filament:

generic PETG

transparent red

Notes:

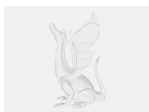
Part is mirrored in slicing software for opposite side.

Category: 3D Printer Parts

Model files



gmax_glass_bed_mount.stl



gmax_glass_bed_mount_v4.step

[Find source .stl files on Thingiverse.com](#)

License ©

This work is licensed under a
[Creative Commons \(4.0 International License\)](#)



Attribution

- ✗ | Sharing without ATTRIBUTION
- ✓ | Remix Culture allowed
- ✓ | Commercial Use
- ✓ | Free Cultural Works
- ✓ | Meets Open Definition