



G1 Transformers Ratchet



Toymakr3d

[VIEW IN BROWSER](#)

updated 16. 11. 2020 | published 16. 11. 2020

Summary

G1 Transformers Ratchet stl base on 1984 Transformers TV Series. This is fully articulated model but not transformable.

[Toys & Games](#) > [Action Figures & Statues](#)

Tags: [toy](#) [robot](#) [transformers](#) [ratchet](#)

G1 Transformers Ratchet stl base on 1984 Transformers TV Series. This is fully articulated model but not transformable.

Disclaimer:

1. Contains small parts and requires high precision. Your printer may need to be properly calibrated for best results.
2. This model is for fan art purposes only. The original Transformers characters are the property of Hasbro/Takara Tomy. The creator is in no way associated with the owners.

Video Preview: <https://youtu.be/8Uoerly3-qU>

- Skale: 1:30 (16.5cm)
- Coloring can be done by using different color of filament (detail on files name)
- No Supports
- Gap tolerance: 0mm balljoint, 0.05mm swivel, 0.05 peg joint

- Best print orientation for maximum strength result
- Easy to print
- Easy to assemble
- Easy to rescale

Point of articulation:

- Neck balljoint
- Abdomen balljoint
- Shoulders balljoint
- Upper arm swivel joint
- Elbow double balljoint
- Wrist swivel
- Waist swivel
- Hip balljoint
- Thigh swivel joint
- Knee double balljoint
- Ankle balljoint
- Toe swivel

Accessories:

- Gun
- Wrench
- Arm Cannon

Important Tips:

- Cutter or sand paper for tolerance adjustment
- Super glue for splited parts
- Use nail polish to fix loose ball joint

Print instructions

- Nozzle: 0.4mm
- Layer: 0.15mm
- Filamen: PLA
- Temperature: 195°C
- Speed: 40/s
- Skin/top/bottom: 0.8mm
- Infill: 30%

Model files



3_rat_head3_eyes_lightblue.stl



4_rat_head4_antenna_black.stl



8_rat_body3_glass_lightblue.stl



5_rat_head5_neck_grey.stl



10_rat_body5_abdomen_red.stl



2_rat_head2_face_grey.stl



12_rat_hand2_shoulders2_red.stl



9_rat_body4_headlight_grey.stl



11_rat_hand1_shoulders_white.stl



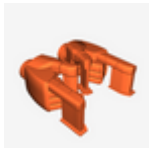
1_rat_head1_helmet_white.stl



6_rat_body1_main_white.stl



13_rat_hand3_top_white.stl



16_rat_hand6_pointed_red.stl



15_rat_hand5_bottom_white.stl



14_rat_hand4_elbowjoint_white.stl



16_rat_hand6_fist_red.stl



7_rat_body2_shoulderjoint_white.stl



18_rat_waist2_side_red.stl



17_rat_waist1_main_red.stl



19_rat_waist3_front_red.stl



22_rat_leg2_thigh_white.stl



21_rat_leg1_hip_white.stl



16_rat_hand6_relax_red.stl



20_rat_waist4_hips_red.stl



16_rat_hand6_salute_red.stl



24_rat_leg4_mainleft_white.stl



27_rat_leg7_bottom2_white.stl



29_rat_wrench_grey.stl



25_rat_leg5_anklejoint_white.stl



24_rat_leg4_mainright_white.stl



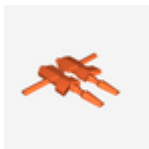
23_rat_leg3_kneejoint_white.stl



26_rat_leg6_bottom_white.stl



30_rat_armcannon_grey.stl



28_rat_gun_grey.stl

[Find source .stl files on Thingiverse.com](#)

License ©



This work is licensed under a
Creative Commons (4.0 International License)

Attribution—Noncommercial—No Derivatives

- ✗ | Sharing without ATTRIBUTION
- ✗ | Remix Culture allowed
- ✗ | Commercial Use
- ✗ | Free Cultural Works
- ✗ | Meets Open Definition