

## pen holder and diplay suport

N Nik

[VIEW IN BROWSER](#)

updated 26. 4. 2023 | published 26. 4. 2023

### Summary

printed in PLA to support my desktop display -> the table mount is a little bit wobbly

[Household](#) > [Office](#)

Tags: [pen](#) [penholder](#) [thingiverse](#) [displaystand](#)

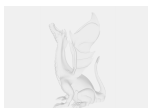
printed in PLA to support my desktop display -> the table mount is a little bit wobbly

Category: Organization

### Model files



penholder.stl



penholder.sldprt

## License ©

This work is licensed under a  
**Creative Commons (4.0 International License)**



### Attribution

---

- ✗ | Sharing without ATTRIBUTION
- ✓ | Remix Culture allowed
- ✓ | Commercial Use
- ✓ | Free Cultural Works
- ✓ | Meets Open Definition