



Honeycomb Storage Wall - Bosch GO2 Electric Screwdriver Holder (Various Mounting Options)



parentpj

[VIEW IN BROWSER](#)

updated 6. 5. 2023 | published 6. 5. 2023

Summary

I needed a holder for my Bosch GO2 Electric Screwdriver that fitted the Honeycomb storage wall by RostaP, so here it is.

[Hobby & Makers](#) > [Organizers](#)

Tags: [honeycomb](#) [wall](#) [holder](#) [organizer](#) [bosch](#)
[toolholder](#) [honeycombstoragewall](#)

This model includes two clips to attach it to the honeycomb.
Not printed yet I'll add a photo when I do.

Edit: Added a standard mount option.

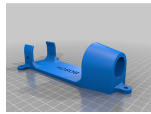
All credits go to zhudafa and RostaP whom did the heavy lifting.

This remix is based on



Honeycomb storage wall

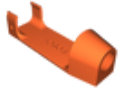
by RostaP



G02

by zhudafa

Model files



hsw-bosch-go2-screwdriver-holder-rotated-insert.stl



hsw-bosh-go2-screwdriver-holder-standard-mount.stl

License ©

This work is licensed under a
[Creative Commons \(4.0 International License\)](#)



Attribution-NonCommercial

- ✗ | Sharing without ATTRIBUTION
- ✓ | Remix Culture allowed
- ✗ | Commercial Use
- ✗ | Free Cultural Works
- ✗ | Meets Open Definition