



KP3S Pro Heatbed cable strain relief, angled



Johan

[VIEW IN BROWSER](#)

updated 18. 5. 2023 | published 18. 5. 2023

Summary

Strain relief for the KP3S Pro heatbed cable, angled at 90 degrees

[3D Printers](#) > [3D Printers - Upgrades](#)

Tags: [kp3spro](#) [strainrelief](#)

The KP3S Pro really needs a strain relief, and the model made by [LMaker](#) is really good. It sticks out a little too far behind the bed for my use case though (my printer cabinet is very small), so I made a version that angles the cable 90 degrees towards the cantilever profile.

In order to make sure that the cable collector doesn't stick out too much towards the back either, I used a slightly longer M3 screw, with a nut in the end, for one side of the cover and tightened down the cable collector against this with a zip tie (see photo).

Printed in PLA with 0.3 mm layer height, 100% infill and later "annealed" to make it more temperature resistant (can withstand 110+ degrees C without issue).

This remix is based on



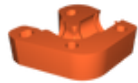
KP3S Pro -- Heatbed cable cover

by LMaker

Model files



bed_cable_strain_relief-top.stl



bed_cable_strain_relief-bottom.stl

License ©

This work is licensed under a
[Creative Commons \(4.0 International License\)](#)



Attribution—Noncommercial—Share Alike

-
- ✗ | Sharing without ATTRIBUTION
 - ✓ | Remix Culture allowed
 - ✗ | Commercial Use
 - ✗ | Free Cultural Works
 - ✗ | Meets Open Definition