



## Ship's Clock USCG or USN, can be bulkhead mounted or desktop display



3dprintguy

[VIEW IN BROWSER](#)

updated 6. 11. 2023 | published 6. 11. 2023

## Summary

Clock case that is based on a WW2 era ship chronometer. The face and case are United States Coast Guard or US Navy

[Art & Design](#) > [Wall-mounted](#)

Tags: [boat](#) [ship](#) [clock](#) [time](#) [sailor](#) [historical](#) [nautical](#) [sailing](#) [military](#) [coastguard](#) [navy](#) [naval](#) [timekeepers](#) [chronometer](#) [uscg](#)

Files will print a ship's clock case that will accommodate an inexpensive quartz movement available from Klockit or Amazon. Included are multiple spacer and shim options for different clock shaft lengths. The clock face requires a filament change to make the numbers visible (I printed the face in black, then 2 layers in white after the face was printed, then changed to glow in the dark for the remainder of the print). PLA used for all parts and TPU used for the gaskets. The only part that may require support is the spacer. The crystal needs to be cut round with a diameter of 5.2" (Acrylic sheet from Home Depot). I will update with a photo of a finished clock when I get one to print well, the parts are going together very well but my printer is challenged with the cosmetic looks on larger curves (I don't have

one that looks good yet). Added 2 additional files they are the same size but are marked US Navy.

## Model files



**clock-face-uscg.stl**



**clock-case-uscg.stl**



**clock-face-usn.stl**



**clock-case-usn.stl**



**clock-front.stl**



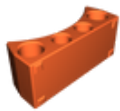
**clock-front-gasket.stl**



**clock-door.stl**



**clock-door-gasket.stl**



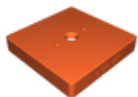
**clock-display-base.stl**

---



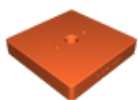
**clock-spacer-1.stl**

---



**clock-spacer-2.stl**

---



**clock-spacer-3.stl**

---



**clock-spacer-shim-05.stl**

## License ©

This work is licensed under a  
[Creative Commons \(4.0 International License\)](#)



**Attribution-NonCommercial**

---

- ✗ | Sharing without ATTRIBUTION
- ✓ | Remix Culture allowed
- ✗ | Commercial Use
- ✗ | Free Cultural Works
- ✗ | Meets Open Definition