

Mini Ender 3 V2



Jaatinen

[VIEW IN BROWSER](#)

updated 27. 4. 2023 | published 27. 4. 2023

Summary

1:4 scale model of Ender 3 V2 with moving parts and functional drawer.

[3D Printers](#) > [Accessories](#)

Tags: [mini](#) [creality](#) [ender3](#) [scalemodel](#) [assemblyrequired](#)
[ender3v2](#)

I wanted to have a little scale model of my 3d printer and decided to quickly model one. It got a little out of hand and now it has all moving parts and even functional little drawer like in the original...

I think this is a great little gift for jealous friends who want a printer but can't afford one. I plan to print couple of extra ones to give away at least. :)

You only need glue and patience to assemble this. I originally had holes for M2 bolts, but decided against it. I left one where place where you can use a bolt to attach the screen if you want, but glue works perfectly fine.

You can choose to print one or two lead screws and Z axis motors depending on how you want it. You can leave the Dual Z Plate.stl out along with the other lead screw and motor if you only want single Z axis.

I added a piece of white TPU as the bowden tube. Later I'll probably also add black TPU or actual wire as the bed heater cable and hotend cables.

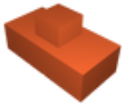
Model files



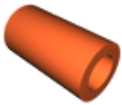
mini-ender-3-v2.3mf



mini-ender-3-v2.step



mini-ender-3-v2-foot-3.stl



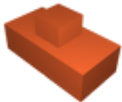
mini-ender-3-v2-bowden-fitting.stl



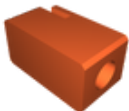
mini-ender-3-v2-z-gantry-2.stl



mini-ender-3-v2-filament-spool-side-2.stl



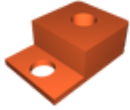
mini-ender-3-v2-foot-4.stl



mini-ender-3-v2-x-belt-tensioner.stl



mini-ender-3-v2-filament-spool-side-1.stl



mini-ender-3-v2-lead-screw-cover.stl



mini-ender-3-v2-carriage-wedge-x-gantry-right.stl



mini-ender-3-v2-hotend.stl



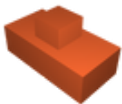
mini-ender-3-v2-carriage-wedge-x-gantry-left.stl



mini-ender-3-v2-lead-screw.stl



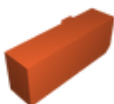
mini-ender-3-v2-y-motor.stl



mini-ender-3-v2-foot-2.stl



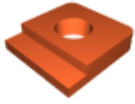
mini-ender-3-v2-leveling-knob-2.stl



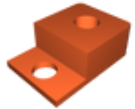
mini-ender-3-v2-y-limit-switch.stl



mini-ender-3-v2-spool-holder.stl



mini-ender-3-v2-dual-z-plate.stl



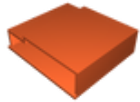
mini-ender-3-v2-lead-screw-cover-2.stl



mini-ender-3-v2-x-gantry.stl



mini-ender-3-v2-lead-screw-2.stl



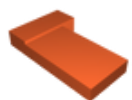
mini-ender-3-v2-drawer-case.stl



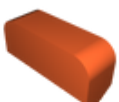
mini-ender-3-v2-drawer-handle.stl



mini-ender-3-v2-leveling-knob-4.stl



mini-ender-3-v2-psu.stl



mini-ender-3-v2-carriage-wedge-hotend.stl



mini-ender-3-v2-extruder-motor.stl



mini-ender-3-v2-hotend-carriage.stl



mini-ender-3-v2-x-motor.stl



mini-ender-3-v2-top-bar.stl



mini-ender-3-v2-z-motor-2.stl



mini-ender-3-v2-z-gantry-1.stl



mini-ender-3-v2-extruder-plate.stl



mini-ender-3-v2-bed-carriage-plate.stl



mini-ender-3-v2-extruder-carriage.stl



mini-ender-3-v2-nozzle.stl



mini-ender-3-v2-y-gantry.stl



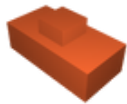
mini-ender-3-v2-leveling-knob.stl



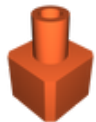
mini-ender-3-v2-screen.stl



mini-ender-3-v2-y-belt-tensioner.stl



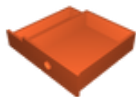
mini-ender-3-v2-foot.stl



mini-ender-3-v2-z-motor.stl



mini-ender-3-v2-leveling-knob-3.stl



mini-ender-3-v2-drawer.stl



mini-ender-3-v2-motherboard-box.stl

mini-ender-3-v2-curve-1.stl



mini-ender-3-v2-x-belt-tensioner-knob.stl



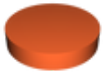
mini-ender-3-v2-x-gantry-end-carriage.stl



mini-ender-3-v2-y-belt-tensioner-knob.stl



mini-ender-3-v2-bottom-frame.stl



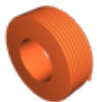
mini-ender-3-v2-extruder-knob.stl



mini-ender-3-v2-build-plate.stl



mini-ender-3-v2-screen-knob.stl



mini-ender-3-v2-filament.stl



mini-ender-3-v2-bed.stl

License

This work is licensed under a
Creative Commons (4.0 International License)



Attribution—Noncommercial—Share Alike

- ✗ | Sharing without ATTRIBUTION
- ✓ | Remix Culture allowed
- ✗ | Commercial Use
- ✗ | Free Cultural Works
- ✗ | Meets Open Definition