

Sliding-Block (Car Parking Puzzle) Remix - Added Wheels



Bilal Özçakır

[VIEW IN BROWSER](#)

updated 26. 4. 2023 | published 26. 4. 2023

Summary

I added wheels to cars, my son wants to play them like a toy car. Everything else remains as original project. For...

[Toys & Games](#) > [Puzzles & Brain-teasers](#)

Tags: [thingiverse](#)

I added wheels to cars, my son wants to play them like a toy car. Everything else remains as original project.

For more detail: <https://www.thingiverse.com/thing:4240341>

Print Settings

Printer Brand:

Creality

Printer:

Ender 5

Rafts:

No

Supports:

Doesn't Matter

Resolution:

0.2

Infill:

10%

Filament: ESUN PLA Plus

Category: Puzzles

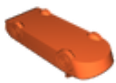
This remix is based on



Chinese Sliding-Block

by ROSE3D

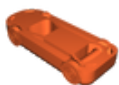
Model files



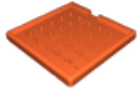
car3-tekerlekli.stl



car2-tekerlekli.stl



car1-tekerlekli.stl



checkerboard.stl

[Find source .stl files on Thingiverse.com](#)

License ©

This work is licensed under a
Creative Commons (4.0 International License)



Attribution

- ✗ | Sharing without ATTRIBUTION
- ✓ | Remix Culture allowed
- ✓ | Commercial Use
- ✓ | Free Cultural Works
- ✓ | Meets Open Definition