



## panda bear necklace/ multicolor files for panda



Merandey

[VIEW IN BROWSER](#)

updated 20. 11. 2020 | published 20. 11. 2020

## Summary

printable chain with panda bear/multicolor printfiles(my bear is painted)

[Fashion](#) > [Other Fashion Accessories](#)

Tags: [chain](#) [necklace](#) [panda](#) [pandabear](#)

printable chain with panda bear/multicolor printfiles(my bear is painted)

## Print instructions

There are two parts:

-The chain is similar to my squirrel necklace, so you need good bed adhesion and well adjusted material to print the chain.  
I choose the layerhigh(depend on the slicer)in that way to get a clear first bridging, like you could see on one of the pictures.

panda bear: 1 extruder (panda.stl and panda\_support.stl)

-The support on the panda bear is included. You can remove it carefully with a small scissors.  
-One panda bear\_stl is without support, so you could add the support in

your own way

-I print the bear at 0.12mm layer high.

-paint it like a panda bear

Finally connect the two parts like you see it on the photo!

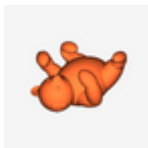
I add multicolor files: 2 colors:

panta\_multi\_white\_fin and panda\_multi\_black\_fin

## Model files



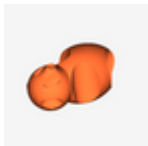
**chain\_smal\_04.stl**



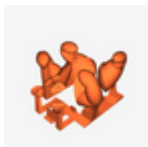
**panda.stl**



**panda\_support.stl**



**panda\_multi\_white\_fin.stl**



**panda\_multi\_black\_fin.stl**

## License ©

This work is licensed under a  
[Creative Commons \(4.0 International License\)](https://creativecommons.org/licenses/by-nc-nd/4.0/)



## Attribution—Noncommercial—No Derivatives

---

- ✗ | Sharing without ATTRIBUTION
- ✗ | Remix Culture allowed
- ✗ | Commercial Use
- ✗ | Free Cultural Works
- ✗ | Meets Open Definition