



Parts Drawer for #1 Coin Envelopes

 cejones2

[VIEW IN BROWSER](#)

updated 16. 11. 2020 | published 16. 11. 2020

Summary

This is a parts drawer for holding small parts in #1 size coin envelopes.



16.48 hrs



5 pcs



0.20 mm



0.40 mm



PLA



240 g



Prusa
MK3/S/S+

[Hobby & Makers](#) > [Organizers](#)

Tags: [openscad](#) [smallpartsstorage](#) [envelopes](#)

This is a parts drawer for holding small parts in #1 size coin envelopes. These envelopes are ideal for small things like resistors, transistors, diodes, seeds, etc.

An Openscad file is included so you can change the sizes. Changing the y dimension is necessary for printing on the mini.

There are two types of dividers. The thick divider fits into notches in the drawer to hold prevent the envelopes from falling over in a partially used drawer. The thin divider can be used the separate groups of envelopes as well.

The knob is attached using a 5mm M3 bolt.

The envelopes can be found here <https://www.amazon.com/s?k=coin+envelopes+%231>

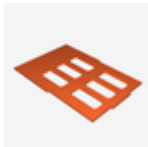
Print instructions

I print this in PLA at 0.2mm. No need for support.

Model files



thin_divide.stl



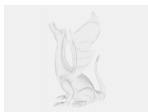
thick-divider.stl



knob.stl



drawer.stl



parts-drawer.scad



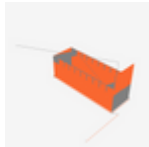
box.stl

Print files



thin_divide_02mm_pla_mk3s_25m.gcode

🌀 PLA 🌀 0.40 mm 📏 0.20 mm ⌚ 0.41 hrs ⚖️ 7 g 🖨️ Prusa MK3/S/S+



drawer_02mm_pla_mk3s_6h30m.gcode

🌀 PLA 🌀 0.40 mm 📏 0.20 mm ⌚ 6.49 hrs ⚖️ 86 g 🖨️ Prusa MK3/S/S+



thick-divider_02mm_pla_mk3s_33m.gcode

🌀 PLA 🌀 0.40 mm 📏 0.20 mm ⌚ 0.55 hrs ⚖️ 8 g 🖨️ Prusa MK3/S/S+



knob_02mm_pla_mk3s_14m.gcode

🌀 PLA 🌀 0.40 mm 📏 0.20 mm ⌚ 0.24 hrs ⚖️ 1 g 🖨️ Prusa MK3/S/S+



box_02mm_pla_mk3s_8h47m.gcode

🌀 PLA 🌀 0.40 mm 📏 0.20 mm ⌚ 8.79 hrs ⚖️ 138 g 🖨️ Prusa MK3/S/S+

License ©

This work is licensed under a
[Creative Commons \(International License\)](#)



Public Domain

- ✓ | Sharing without ATTRIBUTION
- ✓ | Remix Culture allowed
- ✓ | Commercial Use
- ✓ | Free Cultural Works
- ✓ | Meets Open Definition

