

Pastry cut marker 35mm square



MrNik17

[VIEW IN BROWSER](#)

updated 26. 4. 2023 | published 26. 4. 2023

Summary

Used to mark pastries to cut accurate 35mm pieces. 30x30 printer required.

[Household](#) > [Kitchen](#)

Tags: [cutter](#) [marker](#) [mesh](#) [pastry](#)

30x30 printer bed is required, if you need smaller version contact me.

Print 2x holder and 1x mesh marker.

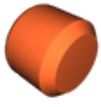
Holders fit into small holes in the mesh, and are used to hold the mesh when imprinting the squares.

it is meant only to mark where to later cut with knife.

Model files



35mm_pastry_marker.stl



pastry_marker_holder.stl

License ©

This work is licensed under a
[Creative Commons \(International License\)](#)



Public Domain

- ✓ | Sharing without ATTRIBUTION
- ✓ | Remix Culture allowed
- ✓ | Commercial Use
- ✓ | Free Cultural Works
- ✓ | Meets Open Definition