

Y Limit Switch/ Endstop Mount - Ender 3



LH

[VIEW IN BROWSER](#)

updated 28. 4. 2023 | published 28. 4. 2023

Summary

Minimalistic Y Limit Switch/Endstop Mount for Ender 3, V2, Neo and others with an Y 40 extrusion

[3D Printers](#) > [3D Printers - Upgrades](#)

Tags: [switch](#) [mount](#) [creality](#) [ender](#) [endstop](#) [limit](#)
[minimalistic](#)

Minimalistic Y Limit Switch/Endstop Mount for Ender 3, V2, Neo and others with an Y 40 extrusion.

Hardware

- M3 5mm x 2
- M3 8mm x 2
- M3 Hex Nuts x 4

Print

100% infill

Installation

Insert the hex nuts into the mount and the V slots.

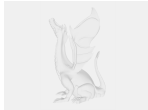
- Screw in the limit switch PCB onto the mount.
- Attach the V Slot Inserts to the mount, but not tighten the screws fully.
- Slide the assembly onto the extrusion on the lower V slot.
- Tighten the screws for the V slot in their final position

Enjoy!

Model files



y-limit-switch.3mf



y-limit-switch.f3d

License

This work is licensed under a
[Creative Commons \(4.0 International License\)](https://creativecommons.org/licenses/by/4.0/)



Attribution

-
- ✗ | Sharing without ATTRIBUTION
 - ✓ | Remix Culture allowed
 - ✓ | Commercial Use
 - ✓ | Free Cultural Works
 - ✓ | Meets Open Definition