

BRIO Builder 2-1 center connector

T Timofei

[VIEW IN BROWSER](#)

updated 27. 4. 2023 | published 27. 4. 2023

Summary

A connector designed to align two blocks with each other when you need to center them.

[Toys & Games](#) > [Building Toys](#)

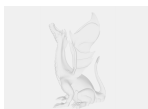
Tags: **brio** **briobuilder**

Pipe diameter is 5.5 mm

Distance between centers is 32.

Step and Fusion 360 files are included, so feel free to modify and improve to your liking.

Model files



brio-2-1-connector.step



brío-2-1-connector.3mf



brío-2-1-connector.f3d

License ©

This work is licensed under a
Creative Commons (International License)



Public Domain

-
- ✓ | Sharing without ATTRIBUTION
 - ✓ | Remix Culture allowed
 - ✓ | Commercial Use
 - ✓ | Free Cultural Works
 - ✓ | Meets Open Definition