



Air Hat 5.2 5.9 ZJ Jeep Dodge Holley throttle body

 Jesse Smith

[VIEW IN BROWSER](#)

updated 27. 4. 2023 | published 27. 4. 2023

Summary

Air intake/throttle body hat for Jeep Grand Cherokee ZJ/ZG with a 5.9 Liter or 5.2 liter engine. Fit stock hood.

[Hobby & Makers](#) > [Automotive](#)

Tags: [air](#) [jeep](#) [intake](#) [v8](#) [cherokee](#) [grand](#) [zg](#) [zj](#)

Polycarbonate or good PETG should handle the heat unless you live in the desert maybe?. May be some other filaments for higher heat applications but I used Priline CFPC at 260c @40mm/s in an enclosed chamber of 120f on an Ender 3v2


DO NOT USE PLA or low temp filaments for this print!!


Hat prints TOP DOWN with tree supports only on bed, 65% overhang should make it support the opening but not the ring. I used 100% infill and 5 walls.


The tube needs a 5-8 mm brim and prints standing up. same settings as the Hat but really it's like 4 walls all the way up with no supports needed.


Glue together with super glue or something similar after it's fitted. The preferred choice would be Methyl Methacrylate based glues for polycarbonate, but CA glue has held well for me.

Model files

 **files** 3 files

**hatbodytube.stl**

**body_6complete.stl**

**hatbody.stl**



hatbody.stl

☐ part 1



hatbodytube.stl

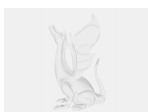
☐ part 2



body_6complete.stl

☐ If you have a Large print bed(complete)

Other files



license.txt



readme.txt

License ©

This work is licensed under a
Creative Commons (4.0 International License)



Attribution

- ✗ | Sharing without ATTRIBUTION
- ✓ | Remix Culture allowed
- ✓ | Commercial Use
- ✓ | Free Cultural Works
- ✓ | Meets Open Definition