



Digital Caliper Tray Mitutoyo



greecher

[VIEW IN BROWSER](#)

updated 23. 5. 2023 | published 23. 5. 2023

Summary

remix of s.e.b. step file into a desktop tray with also a mechanical pencil holder

[Hobby & Makers](#) > [Tools](#)

Tags: [mitutoyo](#) [tray](#)

Update 5/23/2023: I added 2 more models of the tray, both with notches, as I found it sometimes difficult to remove the calipers from the tray. The standard notch is shown, and works well enough, but I also added a larger notch variant to give more room for a thumb (untested, but a minor change).

I remixed the original to be a tray, but also modified it to have a place for the thumbwheel that my set of calipers has, as well as a place to hold a mechanical pencil.

As I do my cad work, I always need my calipers handy, and also a mechanical pencil. The modeled pencil was for a GraphGear 1000 Drafting Pencil.

I included the remixed step file, but only the tray contains the extra features.

This remix is based on



Digital Caliper Case Mitutoyo

by s.e.b.

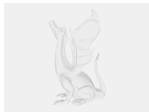
Model files



caliper-desk-tray.3mf



caliper-desk-tray.stl



calipercase_mitutoyo_fullsize-v3.step



caliper-desk-tray-notched.stl



caliper-desk-tray-notched-larger.stl

License ©

This work is licensed under a
[Creative Commons \(4.0 International License\)](#)



Attribution

- ✖ | Sharing without ATTRIBUTION
- ✔ | Remix Culture allowed
- ✔ | Commercial Use
- ✔ | Free Cultural Works
- ✔ | Meets Open Definition