



Keeb.io KBO5000 tenting case parts

 **seanmurf**

[VIEW IN BROWSER](#)

updated 27. 4. 2023 | published 27. 4. 2023

Summary

Split 10deg tenting mounts & wrist rests

[Household](#) > [Office](#)

Adds on to Keeb.io case

<https://github.com/keebio/kbo-5000-case>

(I did take maybe 2mm out of the Keeb.io middle layer height for lower profile, optional)

10deg tenting

Assembly:

1. M2 heat sets into the left/right “open” tenting parts, and keyboard is bolted through keebio layers to sandwich it all together
2. Standoffs I printed in TPA, and put heat sets in that on both sides. M3 heatsets maybe? dunno
3. Wrist rests don't need padding, for me, at least. Print flat side down.

Model files



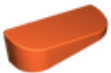
rightshell.stl



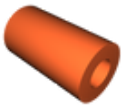
leftshell.stl



leftwristrest_v2_smaller.stl



rightwristrest_v2_smaller.stl



space.stl

License

This work is licensed under a
[Creative Commons \(4.0 International License\)](https://creativecommons.org/licenses/by/4.0/)



Attribution

- ✗ | Sharing without ATTRIBUTION
- ✓ | Remix Culture allowed
- ✓ | Commercial Use
- ✓ | Free Cultural Works
- ✓ | Meets Open Definition

