

ESP32-DevKitC Case for squeezelite

 **seanmurf**

[VIEW IN BROWSER](#)

updated 27. 4. 2023 | published 27. 4. 2023

Summary

For ESP32 and rca plug setup for SPDIF output

[Gadgets](#) > [Audio](#)

Tags: [esp32](#) [logitech](#) [esp](#) [squeeze](#) [microcontroller](#)
[squeezebox](#) [squeezelite](#) [spdif](#) [renderer](#)

Proud of this one:

Super-tight case for esp32, targeted to use for squeezelite

ESP32-DevKitC-VE (https://www.amazon.com/gp/product/B087TNPQCV/ref=ppx_yo_dt_b_search_asin_title?ie=UTF8&psc=1)

Squeezelite: <https://github.com/sle118/squeezelite-esp32>

And I used the diagram there for the GPIO driven SPDIF

It works! Microcontroller logitech media server renderer, plugged into stereo receiver SPDIF input, and looks goooood in clear petg...hehe

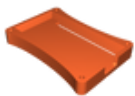
Case would work for many applications...

100nF GPIO ----210ohm-----||---- coax S/PDIF signal out |
110ohm | Ground ----- coax signal ground

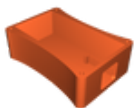
Model files



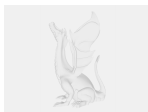
esp_top_v2.stl



esp_bottom_v2.stl



spdif_bottom_v2.stl



esprover_spdif-v6.f3d

License

This work is licensed under a
[Creative Commons \(4.0 International License\)](https://creativecommons.org/licenses/by/4.0/)



Attribution

- ✗ | Sharing without ATTRIBUTION
- ✓ | Remix Culture allowed
- ✓ | Commercial Use
- ✓ | Free Cultural Works
- ✓ | Meets Open Definition