



## IPAD MINI Stand



Michael Ekaireb

[VIEW IN BROWSER](#)

updated 28. 4. 2023 | published 28. 4. 2023

### Summary

IPAD MINI Stand

[Household](#) > [Bedroom](#)

Tags: [ipad](#) [ipadstand](#) [ipadmini](#)

#### History:

- 2023-04-28 Model has been updated not to require support.
- 2023-04-26 Initial release

IPAD MINI Stand to watch TV on bed.

- PETG
- Layer Height:0.3
- Perimeters: 4
- Infill: Gyroid, 20%

You will need to install 10 M3 screw inserts.

You will need 25mm M3 screws.

# Model files



**ipad-mini-bed-frame-base.stl**

---



**ipad-mini-bed-frame-top.stl**

---



**ipad-mini-bed-frame-left.stl**

---



**ipad-mini-bed-frame-right.stl**

---



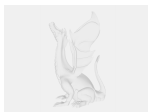
**ipad-mini-bed-frame-base-top.3mf**

---



**ipad-mini-bed-frame-left-right.3mf**

---



**ipad-mini-bed-frame.fcstd**

## License

This work is licensed under a  
[Creative Commons \(4.0 International License\)](https://creativecommons.org/licenses/by-sa/4.0/)



**Attribution-ShareAlike**

---

- ✖ | Sharing without ATTRIBUTION
- ✔ | Remix Culture allowed
- ✔ | Commercial Use
- ✔ | Free Cultural Works
- ✔ | Meets Open Definition