



## Robot completo TMR 2023

 CR-ÆSIR

[VIEW IN BROWSER](#)

updated 27. 4. 2023 | published 27. 4. 2023

## Summary

Robot usado en la competencia de RMRC en el TMR 2023

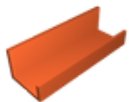
[3D Printers](#) > [3D Printers - Upgrades](#)

Nuestro modelo se basa en un robot de rescate a pequeña escala.

Recomendable imprimir cada pieza con soportes.

Algunas piezas son bases de motores, ejes, etc.

## Model files



**extension-tras.stl**



**back-cover.stl**



**cam-holder.stl**

---



**inside-chasis-conector.stl**

---



**brain-holder.stl**

---



**wrist.stl**

---



**vex-cupler.stl**

---



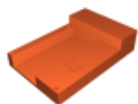
**turret.stl**

---



**hinge.stl**

---



**raspi-model.stl**

---



**right-chasis-conector.stl**

---



**chasis.stl**

---



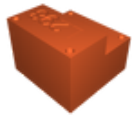
**servo-drive.stl**

---



**battery-holder.stl**

---



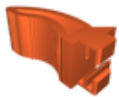
**l298n.stl**

---



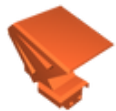
**eje-dentro-del-robot.stl**

---



**claw-side-a.stl**

---



**cam-holder-modified.stl**

---



**arduino-mega-case.stl**

---



**low-arm.stl**

---



**top-arm.stl**

---



**left-chasis-conector.stl**

---



**claw-arm.stl**



**tapa.stl**



**wheel.stl**



**vex-model.stl**

## License

This work is licensed under a  
**Creative Commons (International License)**



**Public Domain**

- 
- ✓ | Sharing without ATTRIBUTION
  - ✓ | Remix Culture allowed
  - ✓ | Commercial Use
  - ✓ | Free Cultural Works
  - ✓ | Meets Open Definition