



Universal Coffee Distributor



Jenstheclown

[VIEW IN BROWSER](#)

updated 27. 8. 2023 | published 27. 8. 2023

Summary

Universal Coffee Distributor.



10.99 hrs



1 pcs



0.10 mm



0.40 mm



PLA



60 g



Prusa MINI /
MINI+

[Household](#) > [Kitchen](#)

Tags: [espresso](#) [coffee](#) [sage](#) [leveler](#) [breville](#) [express](#)
[barista](#) [distributor](#) [brevilleportafilter](#) [brevillebarista](#)
[sagebarista](#) [sagebaristaexpress](#)

This is a fully printed and adjustable portafilter distributor for my Sage Barista Express machine, which uses a 54mm portafilter.

You need to print it in .1 or less to get the threads working correctly. Use the step file and separate the objects.

SAY THANKS:

Buy me a coffee to say thanks: <https://www.buymeacoffee.com/jenstheclown>

Model files



do_not_use.stl

☐ just for the view!



leveler.step

☐ Printable File



leveler.3mf

☐ Prusa Slicer Project File

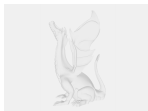
Print files



leveler_01mm_pla_prusa-mini_11h0m.gcode

☐ PLA ☐ 0.40 mm ☐ 0.10 mm ☐ 10.99 hrs ☐ 60 g ☐ Prusa MINI / MINI+

Other files



stlfiles.zip

License

This work is licensed under a
[Creative Commons \(4.0 International License\)](https://creativecommons.org/licenses/by-nc/4.0/)

Attribution-NonCommercial



- ✖ | Sharing without ATTRIBUTION
- ✔ | Remix Culture allowed
- ✖ | Commercial Use
- ✖ | Free Cultural Works
- ✖ | Meets Open Definition