



Webcam Aukey and led bar support



phildesign3d

[VIEW IN BROWSER](#)

updated 30. 4. 2023 | published 30. 4. 2023

Summary

Support for USB Leds bar and Aukey PC-LM3 1080p webcam. 1/4" screw to fix the webcam on the support.

[3D Printers](#) > [3D Printers - Upgrades](#)

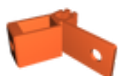
Tags: [3dprinter](#) [aluminiumprofile](#) [ender5](#) [ender5s1](#)

Support for USB Leds bar and Aukey PC-LM3 1080p webcam. 1/4" screw to fix the webcam on the support.

USB support have place for M4 hex nut to maintain the usb.

This support can be plugged on any printer 20x20 alu profile.

Model files



[webcamlight_support.stl](#)



screw_1-4x6.stl

License ©

This work is licensed under a
[Creative Commons \(4.0 International License\)](#)



Attribution—Noncommercial—Share Alike

- ✗ | Sharing without ATTRIBUTION
- ✓ | Remix Culture allowed
- ✗ | Commercial Use
- ✗ | Free Cultural Works
- ✗ | Meets Open Definition