

BearExxa Filament Sensor Cover with LED



Rene

[VIEW IN BROWSER](#)

updated 1. 1. 2024 | published 1. 1. 2024

Summary

Added a little window for Filamentsensor LED.

[3D Printers](#) > [Other Printer Parts & Upgrades](#)

Tags: [led](#) [bear](#) [cover](#) [filamentsensor](#) [bearexxa](#)

Changed the filament sensor cover so that an LED behind it shows the status of the sensor. The side walls of the recess are slightly bent to avoid pushing through. There are two versions of the window insert available. The smaller one fit perfectly in my case at the first try. How the LED gets on the filament sensor is very well described in the original by @Mykal451_7969.

Happy printing

This remix is based on



MK3s+ MMU2 & MMU3 Filament Indicator Cover

by Mykal451

Model files



STEP

5 files



fs_cover-v1.step



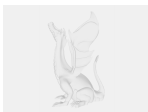
reverse_bowden-v1.step



reverse_bowden_tappex.step



inlay_original.step



inlay_small.step



STL

5 files



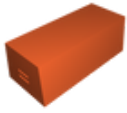
fs_cover-v1.stl



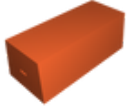
reverse_bowden-v1.stl



reverse_bowden_tappex.stl



inlay_original.stl



inlay_small.stl

License ©

This work is licensed under a
GNU



General Public License v2.0

-
- ✗ | Sharing without ATTRIBUTION
 - ✓ | Remix Culture allowed
 - ✓ | Commercial Use
 - ✓ | Meets Open Definition
 - i | Share under the same license