

UniFi AP AC Pro mount



T Nguyen

[VIEW IN BROWSER](#)

updated 13. 5. 2023 | published 13. 5. 2023

Summary

This is the model to reprint the UniFi AP AC Pro series wifi base when you lose or break the original base



3.37 hrs



1 pcs



0.20 mm



0.40 mm



PET



43 g



Prusa
MK3/S/S+

[Gadgets](#) > [Other Gadgets](#)

Tags: [unifi](#) [wifi](#) [apacpro](#)

This version is for UniFi AP AC Pro model, other models may not be suitable. Print it to replace broken bases with PETG or ABS for rigidity, PLA is also recommended ,i added file without holes so it can be edited to your liking

- Update file .step, .f3d

Model files

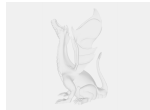


unifi_ap_ac_pro_mount.stl



unifi_ac_pro_step.step

📄 for Soliwork



unifi_ac_pro_fusion.f3d

📄 for Fusion 360

Print files



unifi_ap-ac_pro_mount_02mm_petg_mk3s_3h22m.gcode

🌀 PET 📏 0.40 mm 📏 0.20 mm ⌚ 3.37 hrs ⚖️ 43 g 🖨️ Prusa MK3/S/S+

License ©



This work is licensed under a
[Creative Commons \(International License\)](#)

Public Domain

- ✓ | Sharing without ATTRIBUTION
- ✓ | Remix Culture allowed
- ✓ | Commercial Use
- ✓ | Free Cultural Works
- ✓ | Meets Open Definition