



Travel switch cap for Nitecore HC68 headlamp



Adam

[VIEW IN BROWSER](#)

updated 29. 6. 2023 | published 29. 6. 2023

Summary

This is a cap to prevent the HC68's switch from operating during transport in a bag or luggage



0.54 hrs



1 pcs



0.20 mm



0.40 mm



Flex



5 g



Prusa
MK3/S/S+

[Sports & Outdoor](#) > [Outdoor Sports](#)

Tags: [headlamp](#) [nitecore](#) [protect](#) [cap](#) [disable](#) [transport](#)
[travel](#) [switch](#) [hc68](#)

This is a cap to prevent the **Nitecore HC68**'s switch from operating during transport in a bag or luggage.

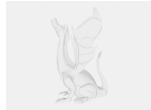
Printing instructions

- Print the .stl file as oriented, in flex material
- If the fit is not perfect (variations in printers and filament), use the scaling feature of the slicer to adjust.

Operating instructions

- To install, gently slide the cap over the switch
- To remove, gently pull the cap off the switch

Model files



travel-cap-for-nitecore-hc68-r1.stl

Print files



travel-cap-for-nitecore-hc68-r1_02mm_flex_230c_32m_... .gcode

Flex 0.40 mm 0.20 mm 0.54 hrs 5 g Prusa MK3/S/S+

License ©

This work is licensed under a
Creative Commons (4.0 International License)



Attribution—Noncommercial—Share Alike

-
- ✗ | Sharing without ATTRIBUTION
 - ✓ | Remix Culture allowed
 - ✗ | Commercial Use
 - ✗ | Free Cultural Works
 - ✗ | Meets Open Definition