

Voron Full Panel Front Door Latches for ~3/4" Aluminum Stair Moulding



MayhemINC

[VIEW IN BROWSER](#)

updated 4. 7. 2023 | published 4. 7. 2023

Summary

Hinged latches and clips for cube style 2020 frame machines utilizing hardware store aluminum molding.

[3D Printers](#) > [3D Printers - Upgrades](#)

Tags: [voron](#) [printerdoorlatches](#)

Full panel door clips for voron or cube style frames. They are offset from the frame enough to allow for quick release side clips. It works in that regard, the side clips need to be unclipped with these closed, its fiddly but works.

They utilize standard hardware store stair molding, last time i got some it ran 5-8 for a 8' section, and comes in various finishes, the piece i had sitting around was 29.4mm wide on the flat side, you may want to print one and take it to the store and check the fit, but every piece i have around here has been the same dimensions.

There are multiple depths, I made mine at 9.5mm and with standard 3/16 insulation were a touch loose but functional. So they are available from 5-9mm depending on your molding. Works better than i had hoped actually. And the released files are unembossed, unlike the renders. The

foam isn't required on the outside unless they are a touch loose, and works better as a small horizontal strip top and bottom.

There are screw holes in the molding side to add set screws but weren't needed with mine.

Model files



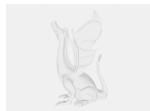
mgvoron_alumbrackets5mm.stp



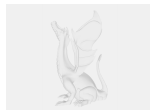
mgvoron_alumbrackets8mm.stp



voron_alumbrackets7mm.stl



mgvoron_alumbrackets9mm.stp



mgvoron_alumbrackets6mm.stp



voron_alumbrackets6mm.stl



voron_alumbrackets9mm.stl



voron_alumbrackets8mm.stl



mgvoron_alumbrackets7mm.stp



voron_alumbrackets5mm.stl



voron_alumbrackets_clips.stl

License ©

This work is licensed under a
[Creative Commons \(4.0 International License\)](#)



Attribution—Noncommercial—Share Alike

- ✗ | Sharing without ATTRIBUTION
- ✓ | Remix Culture allowed
- ✗ | Commercial Use
- ✗ | Free Cultural Works
- ✗ | Meets Open Definition