

2020 Extrusion to 16mm post - 60deg Bracket



BubsBuilds

[VIEW IN BROWSER](#)

updated 29. 6. 2023 | published 29. 6. 2023

Summary

This bracket brings two 2020 extrusions together at 60 degrees and has a clamp for a 16mm wire shelf post.

[Hobby & Makers](#) > [Other Ideas](#)

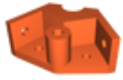
Tags: [clamp](#) [frame](#) [shelf](#) [bracket](#) [tslot](#) [structure](#) [2020](#)
[thingiverse](#) [extrusion](#)

This bracket brings two 2020 extrusions together at 60 degrees and has a clamp for a 16mm wire shelf post. I designed this for building some triangular printer stands, but I figured I'd share them on their own in case anyone might have a need for em! If you'd like to find more about the printer stand, [you can find more about it here](#)

The brackets and caps should print without supports (although depending on your machine's bridging, the caps may benefit from something). The clamp has ridges on top and bottom to engage with the spacing on the wire shelving posts to 'lock' into position. I printed mine at 0.48mm layers out of PETG and have been really happy with them thus far.

Category: DIY

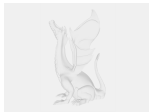
Model files



clampbody.stl



clampcap.stl



clampbody.step

[Find source .stl files on Thingiverse.com](https://www.thingiverse.com/thing:1111111)

License ©

This work is licensed under a
GNU



General Public License v3.0

-
- ✗ | Sharing without ATTRIBUTION
 - ✓ | Remix Culture allowed
 - ✓ | Commercial Use
 - ✓ | Meets Open Definition
 - i | Share under the same license