



## Staff of Homa Genshin Impact - Life-size



mcasteels

[VIEW IN BROWSER](#)

updated 29. 6. 2023 | published 29. 6. 2023

### Summary

Staff of Homa set to life-size and cut into printable pieces. Needs to be glued together

[Costumes & Accessories](#) > [Props](#)

Tags: [staff](#) [cosplay](#) [genshinimpact](#) [homa](#) [genshin](#)

My daughter loves to play Hu Tao. She already made the Staff of Homa in cardboard but I wanted to make one on the 3D printer. I used a wooden broom stick as the actual staff. All the rest is 3D printed. This was my first usage of Prusaslicer 2.6 beta release. I zoomed the model to life size and cut it up in pieces to fit the bed off the Kobra Neo printer. I also used dowels to give the model extra strength. Some of these needed some extra sanding to fit the model perfectly. I did not made the 3D model of the staff

All credits to the designer who did a great job. I just made it bigger and cut it up in pieces. I also included the extra hook that you can print for the bottom part. You need to sand this down and glue it (you need to print it 2 times)

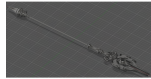
The files included are the 3FM files. Reason is that when I exported the files one by one to STL files, some "cut" information and dowel holes got

lost.

To print I only enabled one file at the time and then sliced that one model.

Remark: it is really big :-)

## This remix is based on



**Staff of Homa - Genshin Impact**

by N30

## Model files



**staff\_of\_homa\_bottom\_cut.3mf**



**staff\_of\_homa\_top\_cut.3mf**



**staff\_of\_homa\_part1\_extra.stl**

## License ©

This work is licensed under a  
[Creative Commons \(4.0 International License\)](#)

**Attribution-NonCommercial**



✗ | Sharing without ATTRIBUTION

- ✓ | Remix Culture allowed
- ✗ | Commercial Use
- ✗ | Free Cultural Works
- ✗ | Meets Open Definition